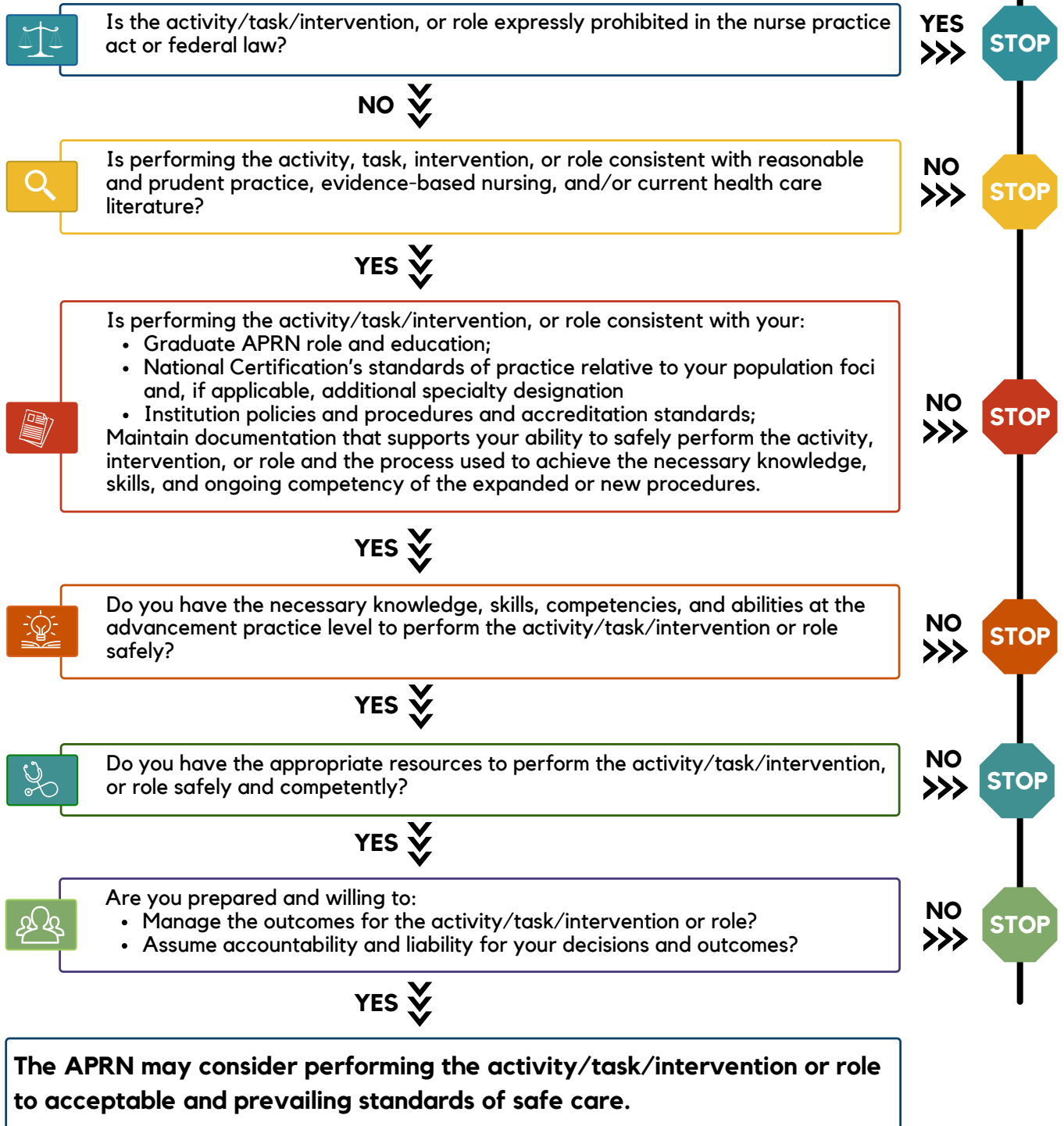


# Hawai'i APRN Scope of Practice

## Decision Making Flow Chart

Identify, describe, or clarify the activity/task/intervention, or role under consideration.



Hawaii State  
Board of  
Nursing



### Resources:

Hawai'i Board of Nursing <http://cca.hawaii.gov/pvl/boards/nursing/>  
Nursing laws and rules: [http://cca.hawaii.gov/pvl/boards/nursing/statute\\_rules/](http://cca.hawaii.gov/pvl/boards/nursing/statute_rules/)  
\*NCSBN Consensus Model <https://www.ncsbn.org/aprn-consensus.htm>  
\*Hawai'i aligned it's laws and rules to the APRN Consensus model in 2014.

Please be advised that this decision-making framework or algorithm is being provided as a guidance when the need arises to determine the APRN's scope of practice. The decision-making framework was developed in accordance with Chapters HRS 457 and HAR 89 and is not intended to address the appropriateness of the use of specific procedures in any particular work setting or to grant permission to implement specific procedures in any particular work setting.

Est. December 2022