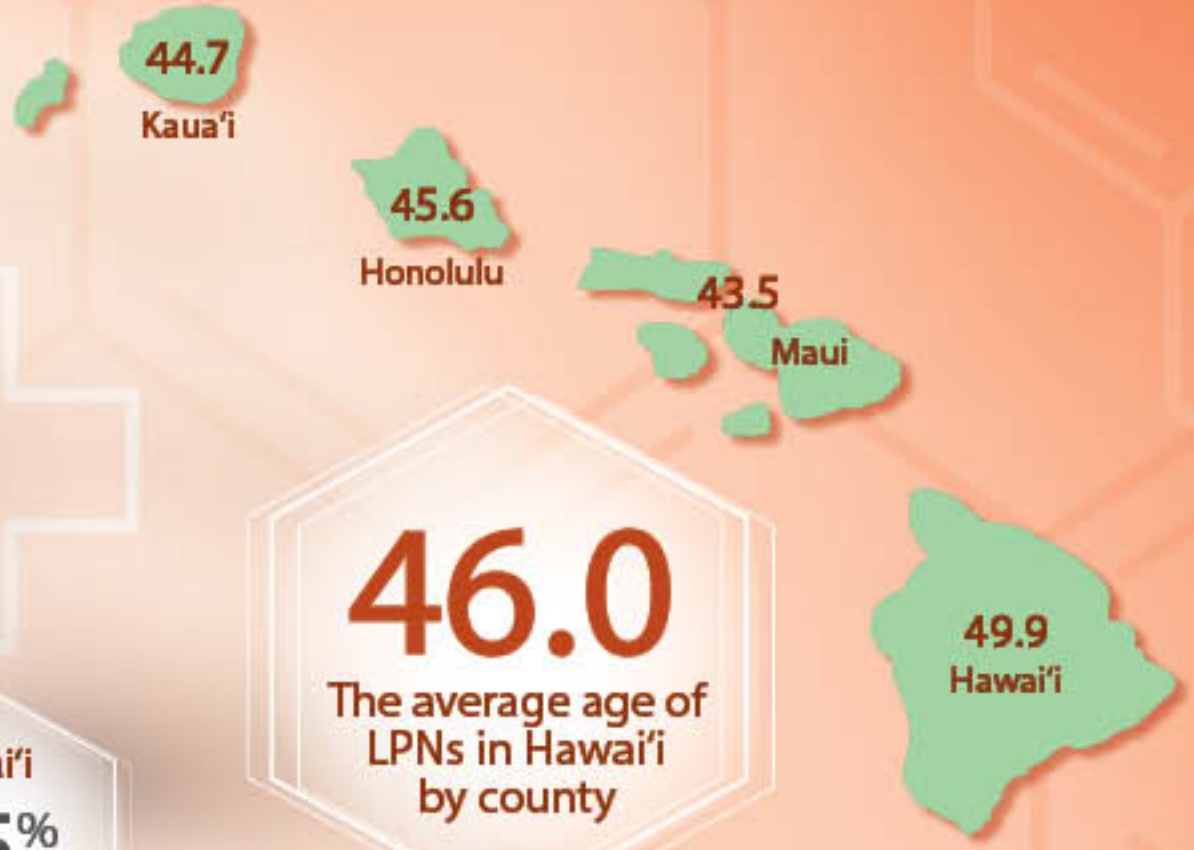


2015 Hawai'i Workforce

Licensed Practical Nurses (LPN)

Male LPNs in Hawai'i



Statewide
9.7%

Honolulu
10.5%

Maui
5.3%

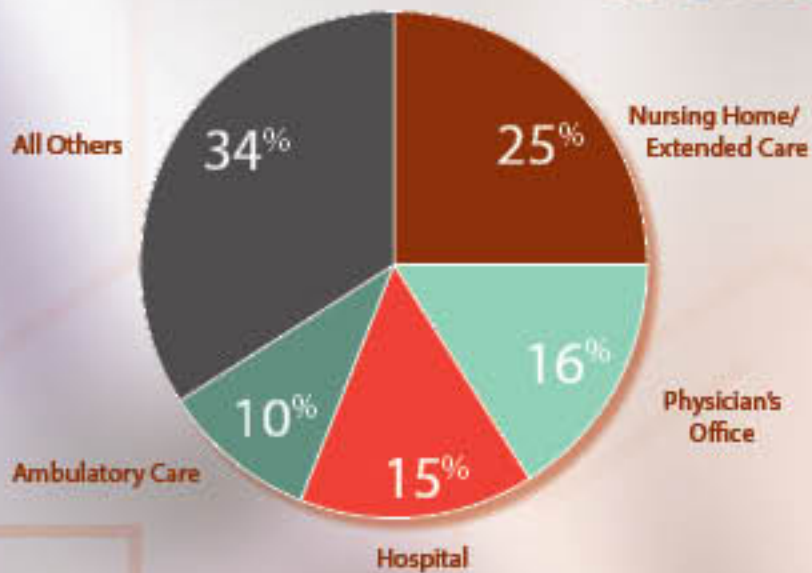
Kaua'i
18.2%

Hawai'i
6.5%

46.0

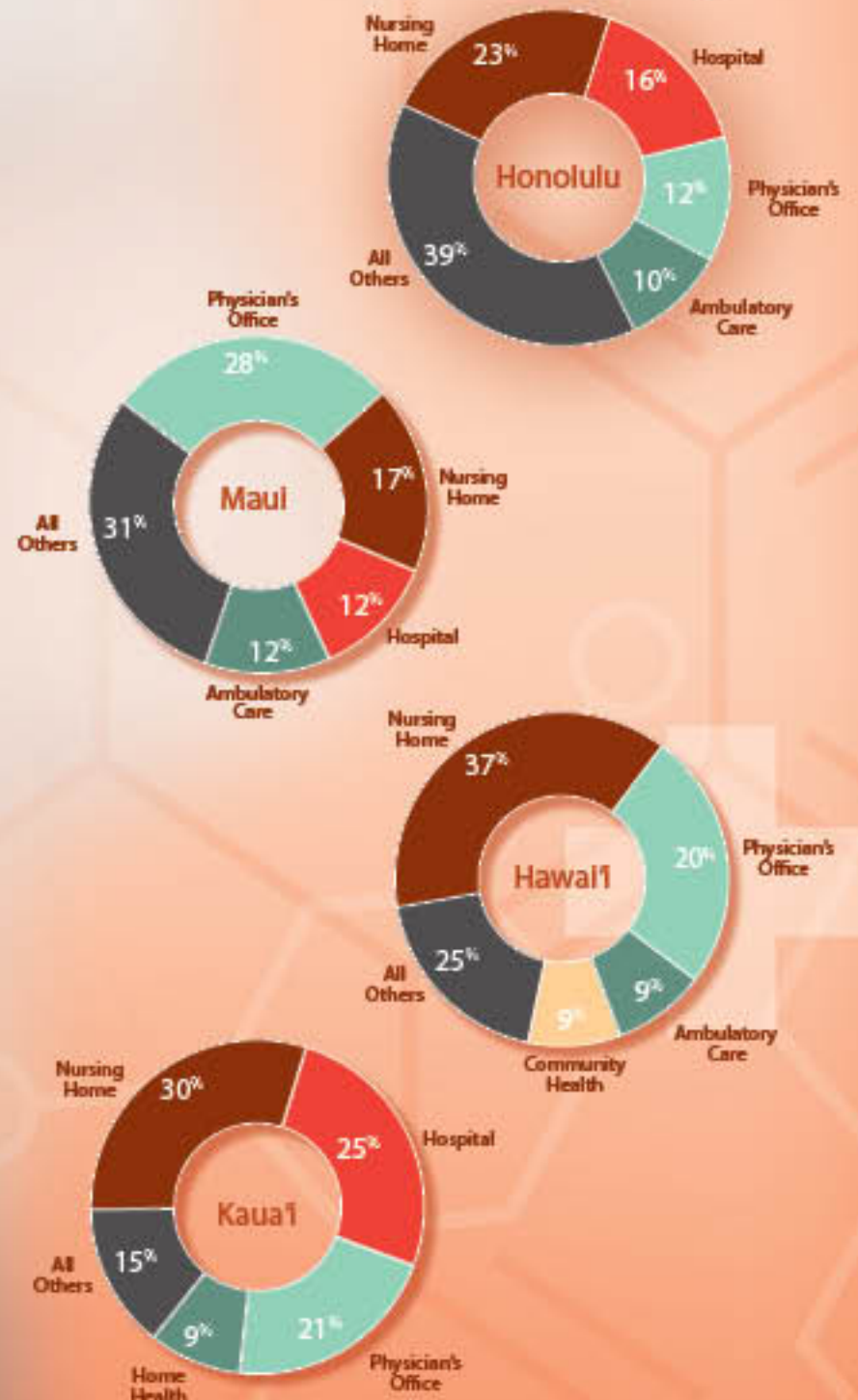
The average age of LPNs in Hawai'i by county

Where Do LPNs Work?



Hawai'i State Center for Nursing (2015), Hawai'i Nursing Workforce Survey.

Where LPNs Work by County



Active LPN Licenses in Hawai'i 2005 to 2015



Source: Department of Commerce and Consumer Affairs, Division of Professional & Vocational Licensing (2005 - 2015) Geo Reports. Reported by the Hawai'i State Board of Nursing.

Source for all other data in this document: Hawai'i State Center for Nursing (2015), Hawai'i Nursing Workforce Survey. *Maui refers to Maui County.