

HSCN ADVISORY BOARD

NOTICE OF MEETING

Saturday, January 30, 2021

Time: 9:00 am-12:30 pm

Via ZOOM Teleconference

Due to COVID-19 Precautions, this meeting will be attended via Conference Call Only
Administered by the Hawai'i State Center for Nursing

Purpose:

The Advisory Board Meeting's purpose is to update the Advisory Board Members of HSCN mandates and activities, and to seek their input and guidance on current and future business.

Agenda:

Time	Item	Owner
8:30 A.M.	Log in	All
9:00 A.M.	Welcome New Board Chairs Welcome	Laura Reichhardt Julio Zamarripa
9:15 A.M.	Perspectives about COVID and the future of the nursing workforce.	Jill Hoggard Green, PhD, RN President and CEO, The Queen's Health System
10:15 A.M.	Break	
10:45 A.M.	Review of Strategic Plan goals for 2021	Laura Reichhardt
11:15 A.M.	Building a tactical case for improving the finances of the Center for Nursing <i>Discussion Questions:</i> <ul style="list-style-type: none"> • Whose buy-in and support do we need to have in order to be successful? • How do we build that buy-in and commitment? 	Lily Bloom Domingo, CommUnity Works, LLC
12:30 P.M.	Adjournment	Julio Zamarripa

Next Meeting: Tuesday, April 20, 2021

*Please look out for e-mail to follow the meeting with minutes for your approval, so they can be posted to the HSCN website within 40 days, in accordance with Act 64 SLH2017.

Attachments:

1. Disclosure Information
2. Meeting Presentation Handout
3. 2021 DRAFT HSCN Board Meeting Schedule

Remote Meeting Access Details (Via ZOOM Conferencing):

You may join the meeting remotely using a computer, smart device or by phone. Please use the Meeting ID and see the access details below for the appropriate modality of access.

Meeting ID: **979 7330 6390**

To join the meeting from your computer, tablet or smart phone, follow the link provided: Link to access meeting:

<https://zoom.us/j/97973306390?pwd=TmQvOHQrbmthTko1Lyt0REVVMUXBpZz09>

To join the meeting using your phone: Dial, +1 346 248 7799 US (Houston), Or +1 669 900 6833 US (San Jose) Or +1 253 215 8782 US (Tacoma), Or +1 312 626 6799 US (Chicago), Or +1 929 436 2866 US (New York) Or +1 301 715 8592 US (Washington D.C)

Find your local number: <https://zoom.us/u/avF3753Zk>

Meeting ID: 979 7330 6390

Passcode: 303370

Auxiliary Service or Disability Accommodation:

If you require an auxiliary aid, auxiliary service or other accommodations due to a disability, please contact Brianne Atwood by phone at (808) 956-0545 or by email at batwood@hawaii.edu. Please make requests as early as possible, to allow adequate time to fulfill your request.

Upon request, this agenda/notice is available in alternative formats such as large print, or an ADA compliant electronic copy.

Invitation List:

Advisory Board Members

Name	Role/Title	Affiliation
Julio Zamarripa MSN, RN	Chair, HSCN Advisory Board Registered Nurse	Straub Clinic and Hospital
Bonnie Castonguay RN	Vice Chair, HSCN Advisory Board Co-founder and President	Ho'okele Health Innovations, LLC
Anne Scharnhorst RN, MN	Member Allied Health Department Chair	Maui Community College
Beth Hoban RN, MAOM	Member Founder, President, Chief Executive Officer	Prime Care Services, Hawai'i, Inc.

Name	Role/Title	Affiliation
Susan Lee RN	Member Wound Care Nurse, Retired	Formerly with Lē‘ahi Hospital
Rose Hata MSN, MBA, RN, APRN, CCRN, CCNS	Member Director, Queen Emma Nursing Institute	The Queen’s Medical Center
Arthur Sampaga RN, MSN, CCRN, CHEP, CNML	Member Chief Nursing Officer, East Hawai‘i Region	Hilo Medical Center
Doreen Nakamura DNP, MBA, RN, NEA-BC, CCM	Member Director of Clinical Care	UHA Health Insurance
Mary Boland DrPH, RN, FAAN	Ex-Officio Member Dean and Professor, School of Nursing & Dental Hygiene	University of Hawai‘i at Mānoa
Susan Young DHA, MSA, RN	Ex-Officio Member Assistant Professor	University of Hawai‘i at West Oahu

Other Attendees

Name	Role/Title	Affiliation
Jill Hoggard Green PhD, RN	Guest Speaker/ President and CEO	The Queen’s Health System
Lily Bloom Domingo	Guest Facilitator/ Principal	CommUnity Works, LLC
Laura Reichhardt MS, A-GNP-C, RN	Executive Director	Hawai‘i State Center for Nursing
Katherine Finn Davis PhD, RN, APRN, CPNP, FAAN	Associate Director, EBP	Hawai‘i State Center for Nursing
Carrie Oliveira PhD	Workforce Researcher	Hawai‘i State Center for Nursing
Liane Muraoka RN	Program Lead	Hawai‘i State Center for Nursing
Brianne Atwood	Program Coordinator	Hawai‘i State Center for Nursing



Provider Activity ID: 23_081520

Information for Continuing Education Credit



The Hawai'i State Center for Nursing is accredited as a provider of nursing continuing professional development by the American Nurses Credentialing Center's Commission on Accreditation.

The Hawaii State Center for Nursing designates this activity for a maximum of 2.0 contact hours.

Activity Overview:

Activity Name:	Hawaii State Center for Nursing Advisory Board Annual Strategic Planning Meeting
Activity Date:	January 30, 2021
Activity Description:	This Board Strategic Planning Meeting will review content relevant to the current state of the nursing workforce in Hawai'i and develop skills related to tactical case for improving the finances of the Center for Nursing
Activity Type:	Internet Live Course
Activity Location:	Online, live

Program Requirements to Receive Contact Hours:

Hawai'i State Center for Nursing is committed to complying with the policy and criteria set for by the American Nurses Credentialing Center (ANCC). Participants should only claim credit commensurate to their participation in this activity. You must successfully complete all program requirements to receive credit for educational activities.

- Attend the activity
- Claim credits commensurate to your participation in the activity
- Complete an evaluation form
- May not claim credits for content provided

Certificate of Completion: HSCN will provide your certificate of completion/verification of participation upon completion of the post-activity evaluation.

Learning Objectives:

Learners will self-report an increase in knowledge

- about COVID and the future of the nursing workforce in Hawaii and beyond,
- regarding whose buy-in and support do we need to have in order to be successful, and
- how to build buy-in and commitment.

Presenters/Speakers/Faculty Relationships

Name:	Title, Affiliation	Conflict of Interest (COI)
Dr. Jill Hoggard Green	Queen's Health System	Employee of The QHS, no conflict of interest found
Lilly Bloom Domingo	CommUnity Works, LLC	none

Planning Committee Relationships:

Name:	Title, Affiliation	COI
Liane Hussey	Program Lead, Hawaii State Center for Nursing	None
Carrie Oliveira	Evaluator, , Hawaii State Center for Nursing	None
Brianne Atwood	Planning Unit Administrator, , Hawaii State Center for Nursing	None
Laura Reichhardt	Lead Nurse Planner, Hawaii State Center for Nursing	None

Conflict of Interest Policy / Content Validation Policy:

As an ANCC approved provider of continuing education, The Hawai'i State Center for Nursing (HSCN) is committed to the identification and resolution of potential conflicts of interest in the planning, promotion, delivery, and evaluation of continuing education. Consistent with concepts outlined in the ANCC Primary Accreditation Provider Manual and the ANCC's Content Integrity Standards, HSCN requires all potential faculty and program planners, to disclose financial relationships with relevant commercial interests in advance. Information provided is used to determine whether participants or planners have potential conflicts of interest. If significant relationships are disclosed, HSCN assesses how those potential conflicts of interest may affect CME/CE content. HSCN requires that all conflicts of interest be resolved prior to participation in the activity. HSCN contributors have significant relationships that cannot be reconciled, HSCN reserves the right to prohibit participation if conflicts cannot be reconciled prior to activity delivery.

Disclosures Statement:

Current accrediting agency guidelines and The Hawai'i State Center for Nursing's policy state that participants in educational activities should be made aware of any affiliation or financial interest that may affect the presentation and if there will be any discussion of unapproved or investigative use of commercial products/devices. Each planning committee member, reviewer and speaker has completed a Disclosure of Relevant Financial Relationships form.

For questions or concerns regarding this activity, please contact Liane Muraoka at muraokal@hawaii.edu.

2528 McCarthy Mall, Webster 402 Honolulu, HI 96822
T 808.956.5211 F 808.956.0547 hscfn@hawaii.edu hawaiicenterfornursing.org

2020 HSCN Advisory Board Strategic Planning Session



Hawai'i State Center for Nursing
January 30, 2021
Virtual Teleconference Meeting

Welcome & Introductions



Welcome new member

- Doreen Nakamura: Director of Clinical Care at UHA Health Insurance and has nursing experience in hospital, community, health Insurance as well as in leadership, evidence-based practice, mentorship & team development.



New Board Leadership

Julio Zamarripa - Chair



Bonnie Castonguay - Vice Chair



Introductions

HSCN Advisory Board

- ▶ Board Leadership
 - ▶ Julio Zamarripa, MSN, RN
 - ▶ Bonnie Castonguay, RN
- ▶ Members at Large
 - ▶ Rose Hata, DNP, MBA, RN, APRN, CCRN-K, CCNS
 - ▶ Beth Hoban, RN, MOAM
 - ▶ Susan "Susie" Lee, RN
 - ▶ Arthur Sampaga, RN, MSN, CCRN, CHEP, CNML
 - ▶ Anne Sharnhorst, MN, RN
 - ▶ Doreen Nakamura, DNP, MBA, RN, NEA-BC, CCM
- ▶ Ex-Officio
 - ▶ Mary Boland, DrPH, RN, FAAN
 - ▶ Susan Young, DHA, MSA, RN

Other Guests

- ▶ HSCN Staff
 - ▶ Laura Reichhardt, MS, APRN, AGPCNP-BC
 - ▶ Katherine Finn Davis, PhD, RN, APRN, CPNP, FAAN
 - ▶ Brianne Atwood
 - ▶ Donnie Banquil
 - ▶ Liane T. Hussey, RN
 - ▶ Carrie Oliveira, Ph.D.
 - ▶ Amy Ono
- ▶ Other guests present

Board Chair Remarks and Welcome

Julio Zamarripa

► **VISION**

A champion for nursing excellence and trusted collaborative partner developing a healthcare workforce committed to the promise of quality care for all the people of Hawai'i.

► **MISSION**

Through collaborative partnerships, the Center provides accurate nursing workforce data for planning, disseminates nursing knowledge to support excellence in practice and leadership development, promotes a diverse workforce and advocates for sound health policy to serve the changing health care needs of the people of Hawai'i.

STRATEGIC PRIORITIES

APRN TRANSITION TO PRACTICE

Explore APRN transition to practice facilitators, barriers, and constructs that will support full healthcare delivery in acute, primary and community care settings.

COMMUNITY BASED HEALTH CARE MANAGEMENT TEAMS

Explore opportunities to optimize community-based health care management through interprofessional healthcare teams that include allied health members.

Agenda Review



Meeting Agenda:

Time	Item	Owner
8:30 A.M.	Log in	Susan Young
9:00 A.M.	Welcome New Board Chairs Welcome	Laura Reichhardt Julio Zamarripa
9:15 A.M.	Perspectives about COVID and the future of the nursing workforce. (CNE Activity)	Dr. Jill Hoggard Green, PhD, RN; President and CEO, The QHS
10:15 A.M.	Break	
10:45 A.M.	Review of Strategic Plan goals for 2021	Laura Reichhardt
11:15 A.M.	Building a tactical case for improving the finances of the Center for Nursing (CNE Activity) Discussion Questions: <ul style="list-style-type: none"> • <u>Whose buy-in and support do we need to have in order to be successful?</u> • <u>How do we build that buy-in and commitment?</u> 	Lily Bloom Domingo, CommUnity Works, LLC
12:30 P.M.	Adjournment	Julio Zamarripa

Housekeeping

- ▶ Videos on!
- ▶ Mics off (unless speaking)
- ▶ The meeting is being recorded.
- ▶ Break is at: 10:15
 - ▶ Take bio-breaks and eat food as you need to.
- ▶ Today we are offering CNEs for the meeting.



<https://tenor.com/view/the-brady-bunch-zoom-meeting-video-call-smile-gif-16927369>

CE Disclosures

The Hawai'i State Center for Nursing is accredited as a provider of nursing continuing professional development by the American Nurses Credentialing Center's Commission on Accreditation.

The Hawai'i State Center for Nursing designates this activity for a maximum of 2.0 contact hours.



CE Disclosures

- ▶ Dr. Hoggard Green and Lily Bloom Domingo's activities will be eligible for CNEs.
- ▶ To receive credit for this activity, participants must:
 - ▶ Attend the activity
 - ▶ Claim credits commensurate to your participation in the activity
 - ▶ Complete an evaluation form
 - ▶ May not claim credits for content provided
- ▶ No conflicts of interest were found for individuals involved in the planning or delivery of this learning activity.
- ▶ All participants were sent disclosure information via email prior to this webinar.

Learner Outcomes

By the end of the presentations, learners will self-report an increase in knowledge

- ▶ about COVID and the future of the nursing workforce in Hawaii and beyond,
- ▶ regarding whose buy-in and support do we need to have in order to be successful, and
- ▶ how to build buy-in and commitment.



Perspectives about COVID and the future of the nursing workforce.

Dr. Jill Hoggard Green, PhD, RN

President and CEO, The QHS



Meeting Break

10:15-10:45



HSCN Year in Review

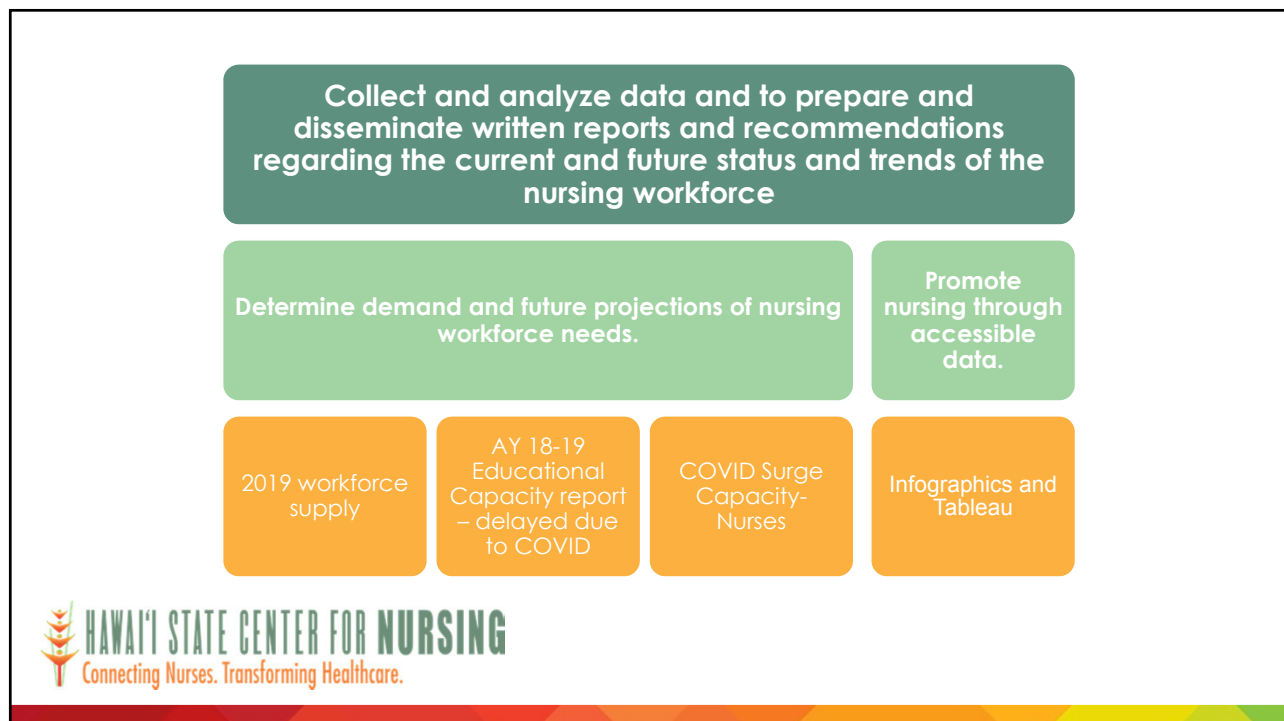
Strategic Priorities
HSCN Programs
Policy Update



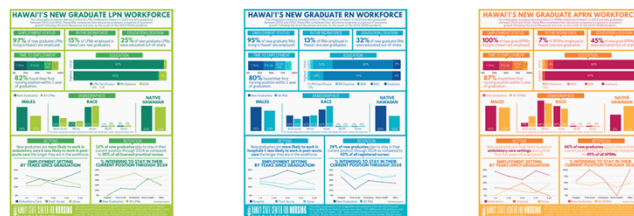
Program Update 2020

Laura Reichhardt
Hawaii State Center for Nursing

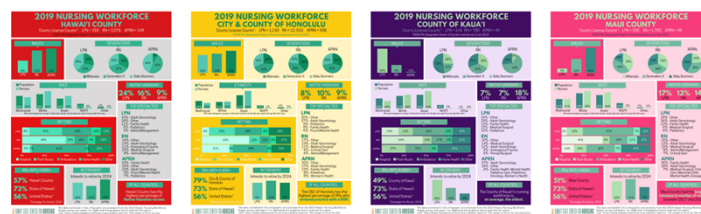




2019 Workforce Supply New Graduate Infographics



2019 Workforce Supply County Infographics



Conduct research on best practices and quality outcomes.

Continue evidence-based practice (EBP) workshop for clinicians and faculty.

Promote evidence-based practice to nurses and healthcare leadership.

Investigate the Center's role in offering continuing competency activities.

2020 EBP Intensive delayed to September (\$)

2020 Writing Workshop launched in June (\$)

2019 Leadership In Action Conference EBP Intensive

Achieved ANCC Provider status! (2000+ hours, \$)





 **HAWAII STATE CENTER FOR NURSING**
Connecting Nurses. Transforming Healthcare.

Develop a plan for implementing strategies to recruit and retain nurses.

Continue nursing student clinical placement optimization through the Centralized Clinical Placement System.

Develop plans to address priority areas based on state workforce research and national best practices.

Continuing effort to ensure clinical placement capacity "in normal times"

Continue new graduate nurse transition to practice efforts through the Hawaii Nurse Residency Program

Current programs sustaining

Steering Committees held in 2019, some activities initiated in 2020

Statewide CCPS - Delayed due to COVID

COVID calls and updates provided weekly

NRP continues; transitioned to Healthstream (\$)

Non-acute care and acute-care specialty role transition to practice now offered

 **HAWAII STATE CENTER FOR NURSING**
Connecting Nurses. Transforming Healthcare.

HAWAII STATE CENTER FOR NURSING
Connecting Nurses. Transforming Healthcare.

CCPS – COVID-19 Updates (As of 7/30)

SPOTLIGHT
RESOURCE (EDUCATION)
• **NEW!** Training and Preparedness for all Kapi'olani Community College Health Students: Overview, Orientation, Training, Compliance and Management of Students Integrated into Lauima. Created by the Clinical Comeback Team

NEWS
• **NEW!** UPDATED Considerations for Reopening U.S. Schools of Nursing During COVID-19 American Association of Colleges of Nursing (AACN) (7/28/2020)

ONGOING DISCUSSION TOPICS
PENDING TOPICS

- Relief from Quarantine requirements for students traveling to or returning from professional setting
- Availability of PPE for Students returning to clinical
- **NCLEX testing centers and the availability of testing sites/dates.**
- Financial & Sourcing Resources for PPE
- Student preparedness support in light of NCLEX delays.
- School PPE Policy for the Academic Setting.
- BON Clinical Curriculum Changes - Experiences & Examples.
- Ability for students to undertake pre-clinical/onboarding resources at clinical sites?
- What to do with open Fall placements? - Open only for facilities not yet accepting places
- MyClinicalExchange onboarding requirement for Kahi Mahala.
- The Queen's Medical Center 5-phase emergency surge plan.

ONGOING EFFORTS
Current HSCN & Collaborative efforts to assess policy, considerations and barriers for the return students to clinical education include...

- **Current Availability of Placements & Associated Policies:** Determining the school and requirements for Students
- **PPE:** Determining the need for PPE and/or PPE support & establishing a consensus PPE possible.
- **Student COVID-19 Training & Preparation:** Determining the current COVID-19 training provided by Schools to prepare students to return to clinicals & establishing a baseline for if possible.

HAWAII PRECEPTOR TAX CREDIT
Become A Registered Preceptor
Register Here

FREE ON-DEMAND WEBINAR
COVID-19 RESOURCES
FOR POST-ACUTE CARE
bit.ly/postacutecovid19
"EARN UP TO 2.25 CNE"
Credit may be claimed per individual module.
To receive continuing education credit, the participant must complete 100% of the activity, complete a post-test with a minimum 70% score, and complete an evaluation form.
This activity has been designated for a maximum of 2.25 contact hours. The Hawaii State Center for Nursing is accredited as a provider of nursing continuing professional development by the American Nurses Credentialing Center's Commission on Accreditation.

HAWAII STATE CENTER FOR NURSING
Connecting Nurses. Transforming Healthcare.

Research, analyze, and report data related to the retention of the nursing workforce.

Improve visibility of Center's work and initiatives and Utilize key partners to amplify reporting outcomes.

Nurses at large

Statewide stakeholders

National Partners

Engage in Communication and Public Awareness Strategies to support strong nursing workforce and Center initiatives.

Expand partnerships to achieve priorities, mandates and goal outcomes.

Diversify funding sources for Center initiatives.

Advocate for sound nursing and health policy development using data-driven strategies.

Engage with national initiatives to ensure Hawai'i's nursing and healthcare is grounded in national best practices and aims.

Statewide CCPS planning committee

Improvements - registration fees, grants, and program funding

Need to address license fees, partner contributions

Legislative Policy

Organizational support

National organizations

National workgroups

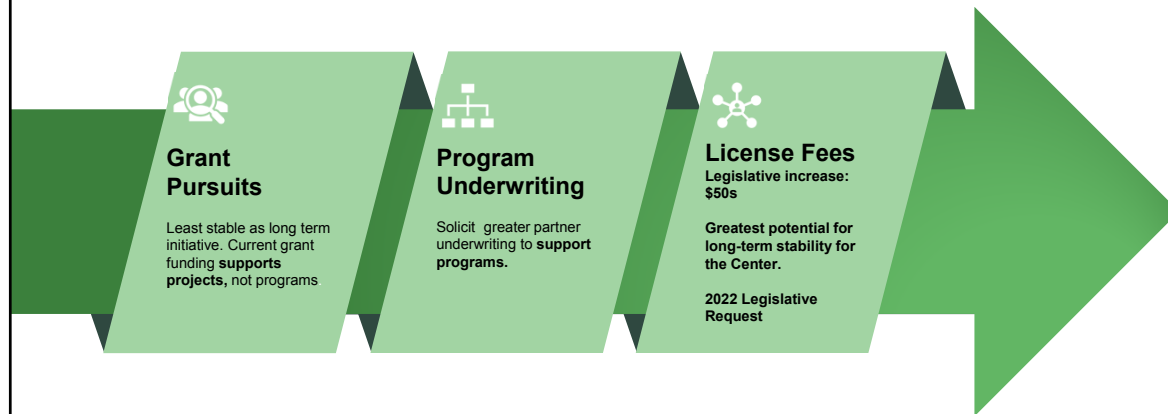


20-21-22

- ✓ Continue existing work and steering committees.
- → Refine and launch research strategies to respond to data needs of initiatives.
- → Expand partnerships (program participants and funding partnerships) to activate and enable Center initiatives.
- → Identify and report initiative outcomes, successes and barriers related to new and existing work initiatives



Fiscal Long-term Sustainability Plan Options



FORECAST						
Fiscal Year 2019-2020	Fiscal Year 2020-2021	Fiscal Year 2021-2022	Fiscal Year 2022-2023	Fiscal Year 2023-2024	Fiscal Year 2024-2025	Fiscal Year 2025-2026
\$ 1,080,000 2,000	\$ 175,000 2,000	\$ 1,090,000 2,000	\$ 183,760 2,000	\$ 1,144,520 2,000	\$ 192,960 2,000	\$ 1,201,760 2,000
\$ 1,082,000	\$ 177,000	\$ 1,092,000	\$ 185,760	\$ 1,146,520	\$ 194,960	\$ 1,203,760
\$ 796,744	\$ 747,930	\$ 760,070	\$ 775,272	\$ 790,777	\$ 806,593	\$ 822,725
\$ 285,256	\$ (570,930)	\$ 331,930	\$ (589,512)	\$ 355,743	\$ (611,633)	\$ 381,035
\$ 1,132,192	\$ 639,381	\$ 971,310	\$ 381,799	\$ 737,542	\$ 125,909	\$ 506,944
Today: \$40	\$ (239,001)		\$ (233,769)		\$ (230,597)	
\$45	\$ (84,876)		\$ (71,734)		\$ (60,257)	
Goal: \$50	\$ 73,249		\$ 94,301		\$ 114,083	





Building a tactical case for improving the finances of the Center for Nursing

Lilly Bloom Domingo, CommUnity Works, LLC



Whose buy-in and support do we need to have in order to be successful?

How do we build that buy-in and commitment?



HAWAII STATE CENTER FOR NURSING
Connecting Nurses. Transforming Healthcare.

HSCN Advisory Board Strategic Planning Session: May 18, 2019
Evaluation Form

Please indicate how much you agree with the following statements by circling your response using the scale provided, where 1 = strongly disagree and 5 = strongly agree.

	SD	D	N	A	SA
The meeting purpose and objectives were clearly stated.	1	2	3	4	5
Our meeting time was convenient for me.	1	2	3	4	5
Our meeting place was convenient for me.	1	2	3	4	5
We shared decision-making at the meeting.	1	2	3	4	5
All meeting participants were actively involved.	1	2	3	4	5
We used our meeting time effectively.	1	2	3	4	5
The guest presenter was helpful to the group.	1	2	3	4	5
I am satisfied with this meeting.	1	2	3	4	5
I enjoyed this meeting.	1	2	3	4	5

1. What aspects of this meeting were particularly good?

2. What aspects of this meeting could be improved?

3. Do you have any suggestions or additional comments about this meeting?

4. Do you have any suggestions or recommendations for next year's annual meeting location/venue?

WEB-BASED SURVEY

HSCN Advisory Board 2020



<https://tenor.com/view/the-brady-bunch-zoom-meeting-video-call-smile-gif-16927369>

Reminder!

- ▶ Dr. Hoggard Green and Lily Bloom Domingo's activities will be eligible for CNEs.
- ▶ To receive credit for this activity, participants must:
 - ▶ Attend the activity
 - ▶ Claim credits commensurate to your participation in the activity
 - ▶ Complete an evaluation form

Post-activity & Meeting Evaluation

- ▶ Complete the post-activity evaluation survey within 7 days.
 - ▶ https://www.surveymonkey.com/r/CE_23_081520
- ▶ A Certificate of Completion will be provided by email upon completion of the requirements within 30 days.
- ▶ Please contact Brianne Atwood at batwood@hawaii.edu or by phone at (808) 956-0545 with any post -meeting questions you may have.



Thank You !

Hawai'i State Center for Nursing

Hawai'i State Center for Nursing DRAFT 2021 Advisory Board Meetings

Date	Type	Time	Location	Room	Remote Access Link
Tuesday 30-Jan-2021	Strategic Planning Session	9:00 A.M. -12:30 P.M.	Conference Call Only COVID Precautions ZOOM Conferencing	Conference Room 105H	https://zoom.us/j/97973306390... Meeting ID: 979 7330 6390 Passcode: 1ShLzi (669) 900-6833 or (929) 436 2866
Tuesday 20-Apr-2021	Regular	5:30 P.M. -7:00 P.M.	TBD Pending COVID		
Tuesday 18-May-2021	Regular	5:30 P.M. -7:00 P.M.	TBD Pending COVID		
Saturday 21-Aug-2021	Strategic Planning Session	9:00 A.M. -12:00 P.M.	TBD Pending COVID		
Tuesday 16-Nov-2021	Regular	5:30 P.M. -7:00 P.M.	TBD Pending COVID		

- May 18th Meeting to include Advisory Board Leadership Elections.

To ensure equal accessibility, this document is available in alternative formats (e.g. large print, digital copy, audio, etc.) upon request. Please contact Brianne Atwood at batwood@hawaii.edu or by phone at (808) 956-0545 to requests accessible alternative formats.